
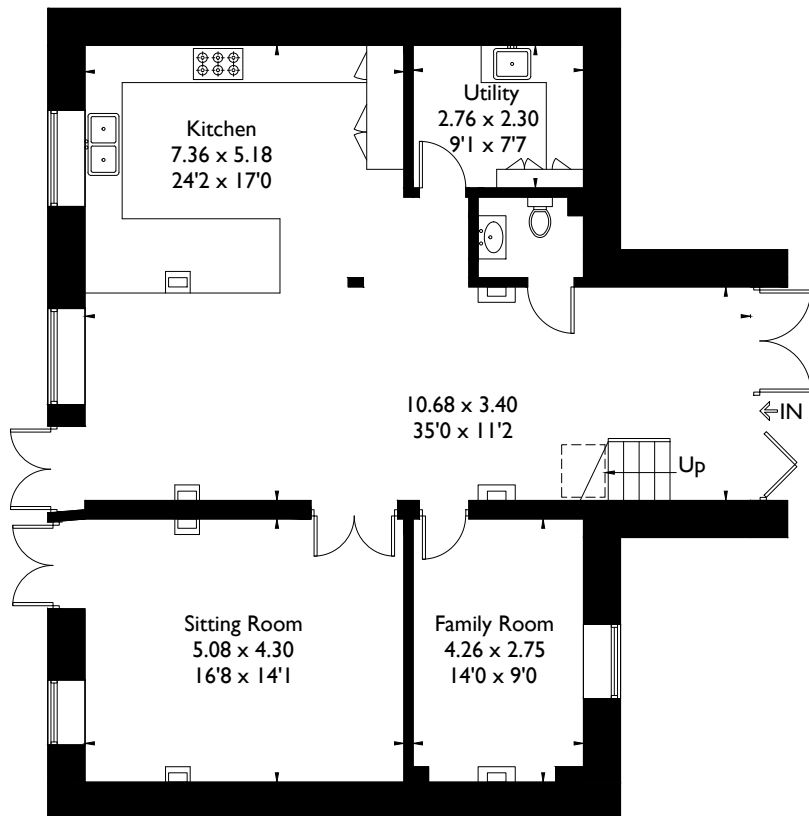


New Development Denham Court Farm

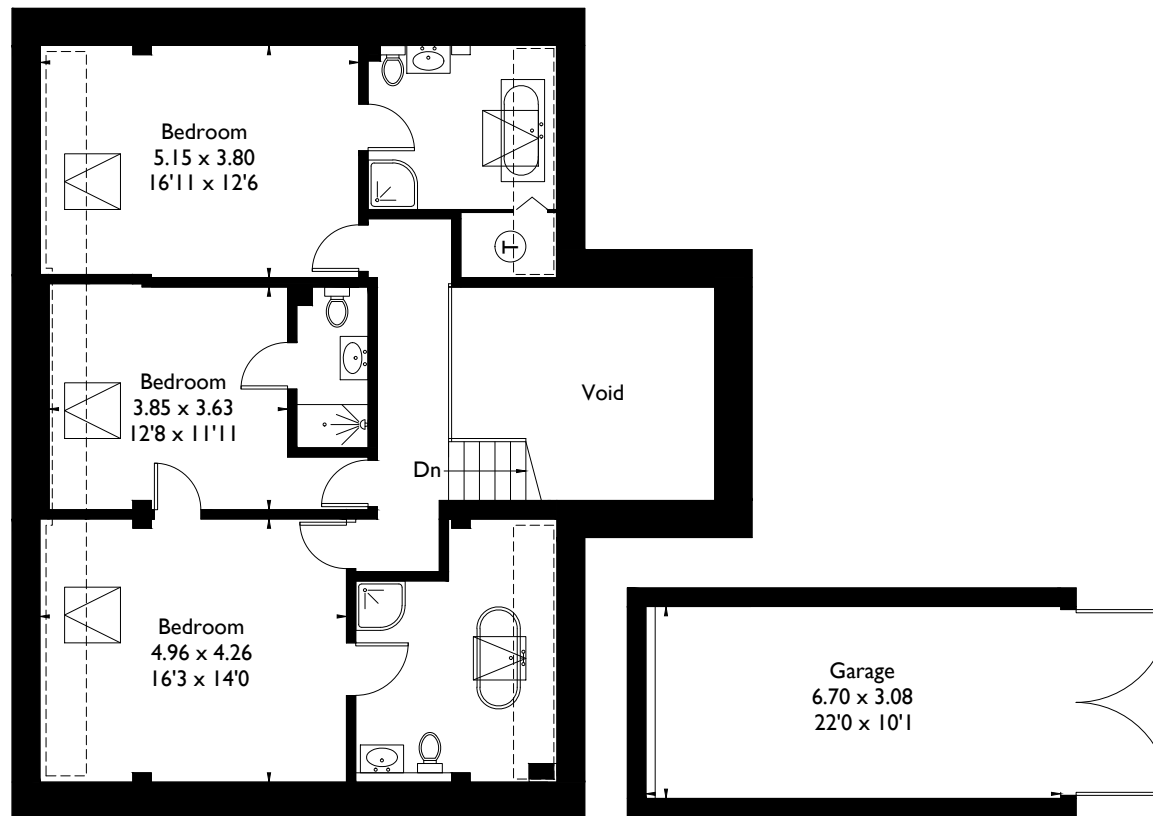
Approximate Gross Internal Area = 197.0 sq m / 2120 sq ft
 Outbuilding = 20.8 sq m / 224 sq ft
 Total = 217.8 sq m / 2344 sq ft



 = Reduced headroom below 1.5m / 5'0"



Hayloft Ground Floor



Hayloft First Floor

(Not Shown In Actual Location / Orientation)

FLOORPLANZ © 2017 0203 9056099 Ref: 190358

This plan is for layout guidance only. Drawn in accordance with RICS guidelines. Not drawn to scale unless stated. Windows & door openings are approximate. Whilst every care is taken in the preparation of this plan, please check all dimensions, shapes & compass bearings before making any decisions reliant upon them.