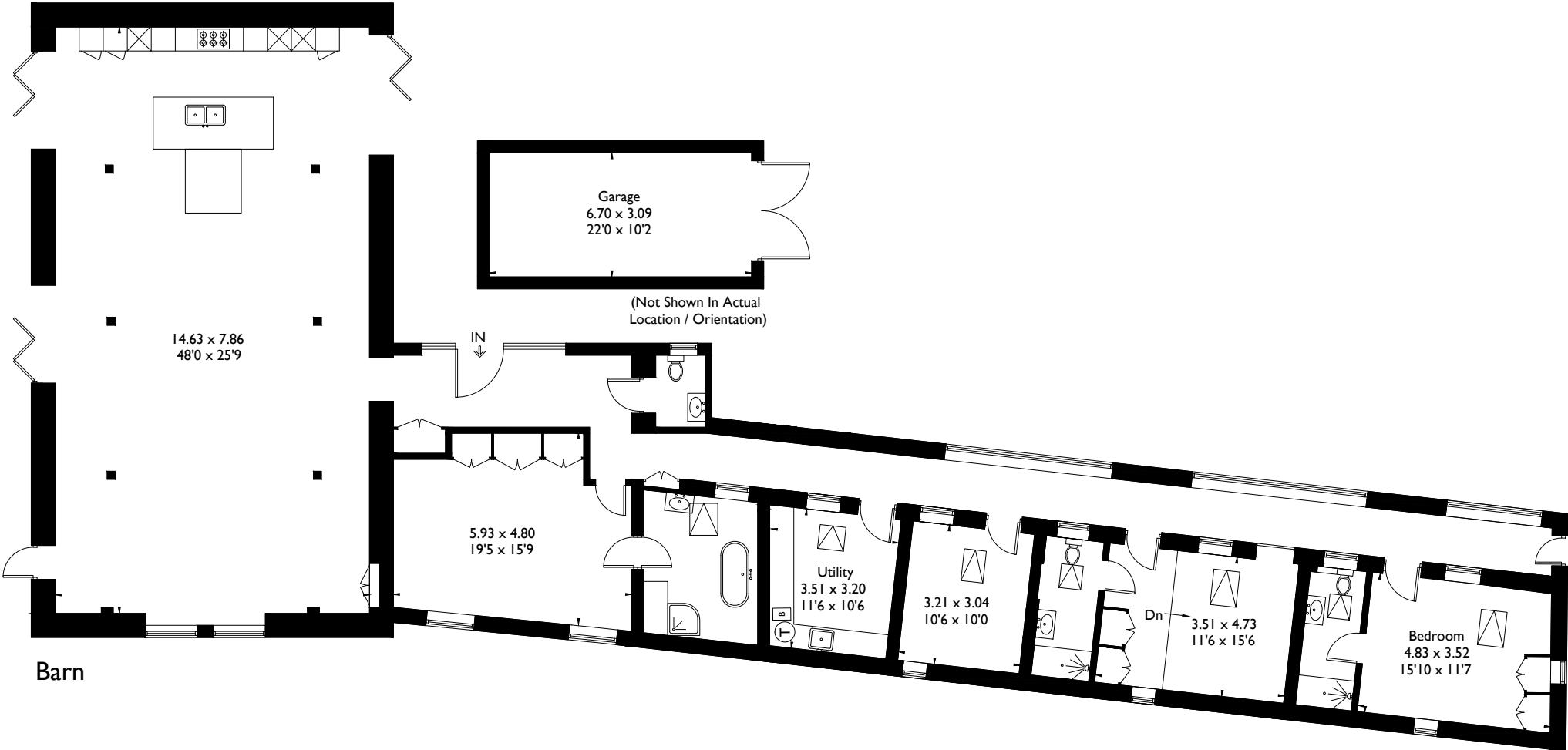


New Development Denham Court Farm

Approximate Gross Internal Area = 281.2 sq m / 3027 sq ft
Outbuilding = 20.3 sq m / 219 sq ft
Total = 301.5 sq m / 3246 sq ft



FLOORPLANZ © 2017 0203 9056099 Ref: 190358

This plan is for layout guidance only. Drawn in accordance with RICS guidelines. Not drawn to scale unless stated. Windows & door openings are approximate. Whilst every care is taken in the preparation of this plan, please check all dimensions, shapes & compass bearings before making any decisions reliant upon them.